



Label Design Software



Features Overview

Information in this document is subject to change without notice, and does not represent a commitment on the part of SATO Europe GmbH. The software, which includes information contained in any database, described in this document is furnished under a licence agreement or non-disclosure agreement and may be used or copied only in accordance with the terms of the agreement. It is against the law to copy the software, except as specifically allowed for in the licence or non-disclosure agreement.

No part of this document may be reproduced or transmitted in any form or by any means, electronic or mechanical, including photocopying and recording, for any purpose, without the express written permission of SATO Europe GmbH.

©1992 - 2000 SATO Europe GmbH. All rights reserved.

Companies, names and data used in examples herein are fictitious unless otherwise noted.

Microsoft, MS, MS-DOS, Windows and Windows NT are registered trademarks of Microsoft Corporation, USA.

SATO and the SATO logo are registered trademarks of SATO Corporation, Japan.

All other brand and product names are trademarks or registered trademarks of their respective companies.

Dynamic Aviator Label Suite, Dynamic Installation, Dynamic Configuration, Dynamic Database, Dynamic Masquerade, Dynamic Memory Card Compiler, Dynamic Sentry, Dynamic Network Installation, Dynamic Publisher, SEGSOFT DYNAMIC and Dynamic Xtra are trademarks of SATO Europe GmbH.

Contents

| | |
|--|----|
| 1. SATO Printers supported by SATO Label Design Software | 1 |
| 2. DYNAMIC XTRA | 3 |
| 2.1 System requirements | 3 |
| 2.2 Features | 3 |
| Design | 3 |
| Text | 3 |
| Graphics | 4 |
| Barcodes | 4 |
| Variable fields | 4 |
| Miscellaneous | 5 |
| 3. DYNAMIC PUBLISHER | 6 |
| 3.1 System requirements | 6 |
| 3.2 Features | 6 |
| Design | 6 |
| Miscellaneous | 7 |
| Text | 7 |
| Graphics | 7 |
| Barcodes | 7 |
| Variable field | 8 |
| Connectivity | 9 |
| Database | 9 |
| Printing | 9 |
| 4. DYNAMIC AVIATOR | 11 |
| 4.1 System requirements | 11 |
| 4.2 Features | 11 |
| Design | 11 |
| Miscellaneous | 12 |
| Text | 12 |
| Graphics | 12 |
| Barcodes | 12 |
| Variable fields | 13 |
| Connectivity | 14 |
| Database | 14 |
| Printing | 15 |

Custom Data-Entry Forms/Applications for Printing 15

5. SEGSOFT DYNAMIC 16

5.1 System requirements 16

5.2 Features 16

Design 16

Miscellaneous 16

Text 16

Graphics 17

Barcodes 17

Variable fields 17

Connectivity 18

Database 18

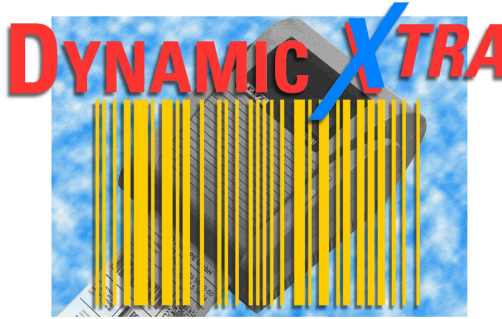
Printing 18

1. SATO Printers supported by SATO Label Design Software

| Printer | DYNAMIC AVIATOR/ DYNAMIC PUBLISHER | SEGSOFT DYNAMIC Full/Lite | SEGSOFT DYNAMIC Limited | DYNAMIC Xtra |
|----------------|---|---------------------------------|-------------------------------|-----------------|
| M3200 | | ✓ | | |
| M3480 | | ✓ | | |
| M4762 | | ✓ | | |
| CL408 | ✓ | ✓ | ✓ | |
| CL412 | ✓ | ✓ | ✓ | |
| CL408/412e | ✓ | | | |
| CL608(VA) | ✓ | ✓ | | |
| CL612(VA) | ✓ | ✓ | | |
| CL608/612(VA)e | ✓ | | | |
| CX200 | ✓ | ✓ | | ✓ |
| CX210 | ✓ | | | ✓ |
| M5900 | ✓ | ✓ | ✓ | |
| M5900RV | ✓ | | | |
| M8400/8 | ✓ | ✓ | | |
| M8400/6 | ✓ | ✓ | | |
| M8400RV | ✓ | ✓ | | |
| M8400RVe | ✓ | | | |
| M8450 | ✓ | ✓ | | |
| M8400S | ✓ | ✓ | | |
| M8459S | ✓ | ✓ | | |
| M8459Se | ✓ | | | |
| M8460S | ✓ | ✓ | | |
| M8460Se | ✓ | | | |
| M8460S_OH | ✓ | ✓ | | |
| M8460S_OHe | ✓ | | | |
| M8485S | ✓ | ✓ | | |

| | | | | |
|------------|---|---|--|---|
| M8485Se | ✓ | | | |
| M8485S_OH | ✓ | ✓ | | |
| M8485S_OHe | ✓ | | | |
| M8490S | ✓ | ✓ | | |
| M8490Se | ✓ | | | |
| M8490S_OH | ✓ | ✓ | | |
| M8490S_OHe | ✓ | | | |
| DR300 | ✓ | | | ✓ |
| XL400 | ✓ | ✓ | | |
| XL410 | ✓ | ✓ | | |
| CT4xx | ✓ | | | ✓ |

2. DYNAMIC XTRA



2.1 System requirements

- Windows 95/98/NT/ME and 2000
- Pentium-based IBM-compatible PC
- 16 MB of RAM (32MB recommended)
- 6-8 MB of available hard disk space

2.2 Features

Design

Fits seamless in the Standard Windows Environment: Move and resize objects with the mouse, use of clipboard, undo, redo and zoom, Right-click menus, MDI (Multiple Document Interface).

Up-to-date User Interface: Windows “Look and Feel” User Interface with all the latest features for optimal usability.

Wizards: A Collection of Wizards offers active help for the label design (label setup, define variable fields).

WYSIWYG Design: Designing of labels in fully What You See Is What You Get manner and preview of labels with variable fields and actual data on the screen.

Powerful Design Tools: Easy designing of label using the tools and features as: Align (to label), Grid, Justification, Cut, Copy and Paste.

Lines & Boxes: Prints graphic elements with custom size and thickness

Label Stock: Use predefined SATO Dynamic Label sizes or create custom-specific sizes.

On-line help: Comprehensive On-line help system including examples

Text

Windows Fonts: All sorts of Windows fonts (True-Type, ATM Type 1...) can be used on all types of printers.

Printer Fonts: Even Printer-internal fonts (Matrix, Vector) are fully supported.

Text justification: Fixed, but also variable Text can be aligned to left, right or centre.

Graphics

Pictures, Logos: Dynamic Xtra supports six different graphic formats (PCX, GIF, BMP, JPG, WMF, PUT)

Resize, Stretch, Rotate: The changing of size and position can be done with the mouse, rotation is possible in steps of 1°.

Barcodes

All Standard Barcodes: Supports all Industrial Standard Types of Barcodes

2D Symbolologies: All the latest 2D barcodes supported

UCC/EAN 128 Wizard: Dynamic Xtra gives active help for the usage of UCC/EAN 128 barcodes with more than 100 predefined Application Identifiers and Application Identifier data control.

Size, Ratio, Expansion: The user can specify all Barcode specific parameters

Human readable: Dynamic Xtra gives total control over the human interpretation of the barcode contents.

Check Digit Generation: A Check Digit can be automatically generated if needed.

Variable fields

Wizards: Offering active help to create all types of variable fields.

Excel access: Access to variable data with an Excel based database tool.

Keyboard Input: Dynamic Xtra will prompt for the field contents before the production will start. Also, a full data validation will be carried out.

Date&Time Stamp: With Dynamic Xtra, almost any date and time format can be printed.

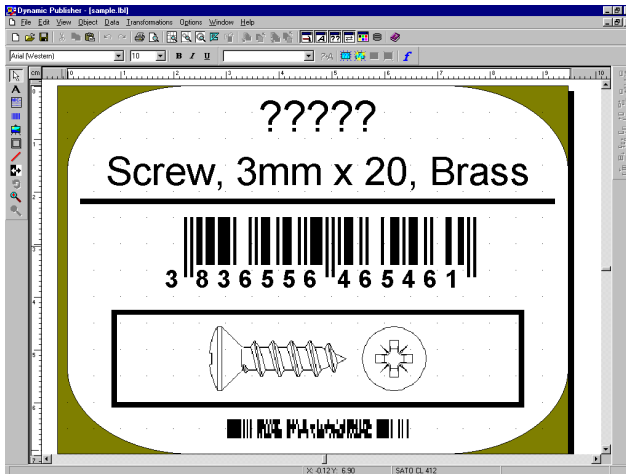
Sequential Numbering: The automatic incrementing and decrementing function with custom step and count is very useful if, for example, serial numbers are required.

Date Calculation: The automatic date calculation function makes the creating of a “Best Before” (expiry date) field as simple as possible.

Miscellaneous

Multiple-Language Support: Dynamic Xtra is currently translated to more than 10 languages.

3. DYNAMIC PUBLISHER



3.1 System requirements

- Windows 95/98/NT/ME and 2000
- Pentium-based IBM-compatible PC
- 16 MB of RAM (32MB recommended)
- 8 - 30 MB of available hard disk space
- CD-ROM drive

3.2 Features

Design

Fits seamlessly into the Windows Environment: Move and resize objects with the mouse, use of clipboard, undo, redo and zoom, Right-click menus, MDI (Multiple Document Interface), Drag & Drop objects from one label to another, Full colour support...

Up-to-date User Interface: Windows “Look and Feel” User Interface with all the latest features for optimal Usability.

Wizards: A Collection of Wizards offers active help for label design (label setup, definition variable fields, using data from database...).

WYSIWYG Design and Print Preview: Designing of labels in fully What You See Is What You Get manner and preview of labels with variable fields and actual data on the screen.

Powerful Design Tools: Easy designing of label using the tools and features as: Align (to label), Grid, Colours, Justification, Cut, Copy and Paste.

Lines & Boxes: Prints graphic elements with custom size and thickness

Label Stock: Use predefined SATO Dynamic stock label sizes or create custom-specific sizes .

On-line help: Comprehensive On-line help system including examples

Miscellaneous

Multiple-Language Support: Dynamic Publisher is currently translated into more than 10 languages.

Complete Euro support: The €-sign as well as a very flexible currency exchange function is implemented.

Password protection: This allows different user rights (Print only, Design only...)

Log file: Tracks all data related to the label production (also variable data) and can also be exported to an ASCII file.

Import labels: Labels designed in other programs (SegSoft Dynamic, EPC Label, Label Wizard, Dynamic Xtra...) can be reprocessed in Dynamic Publisher

Text

Windows Fonts: All sorts of Windows fonts (True-Type, ATM Type 1...) can be used on all types of printers.

Printer Fonts: Even Printer-internal fonts (Matrix, Vector) are fully supported.

Paragraph Text: Multi-line text elements with word wrap, best-fit, full justification and font control.

Text justification: Fixed, but also variable Text can be aligned to left, right or centre.

Graphics

Pictures, Logos: Dynamic Publisher supports six different graphic formats (PCX, GIF, BMP, JPG, WMF, PUT)

Resize, Stretch, Rotate: The changing of size and position can be done with the mouse, rotation is possible in steps of 1°.

Mirror: Graphics can be mirrored vertically as well as horizontally.

Barcodes

All Standard Barcodes: Supports all Industrial Standard Types of Barcodes

2D Symbolologies: All the latest 2D barcodes supported

SSCC, UCC/EAN 128 Wizard: Dynamic Publisher gives active help with specially designed Wizards for the usage of UCC/EAN 128 barcodes with more than 100 predefined Application Identifiers and Application Identifier data control.

Size, Ratio, Expansion: The user can specify all Barcode specific parameters

Human readable: Dynamic Publisher gives total control over the human interpretation of the barcode contents.

Check Digit Generation: A Check Digit can be automatically generated if needed.

Check Digit Algorithms: Even custom Check Digit Algorithms can be created.

Variable field

Wizards: Offering active help to create all types of variable fields.

Keyboard Input: Dynamic Publisher will prompt for the field contents before the production starts. Also, a full data validation will be carried out.

Date&Time Stamp: With Dynamic Publisher, almost any date and time format can be printed.

Sequential Numbering: The automatic incrementing and decrementing function with custom step and count is very useful if, for example, serial numbers are required.

Date Calculation: The automatic date calculation function makes the creating of a “Best Before” (expiry date) field as simple as possible.

Graphics: The use of variable graphic fields with full graphic size control is possible as well.

Advanced Variable Features: It is possible to define Prefix, Suffix, Justification, Pad Character, Default values and many more Variable properties.

Linked Fields: Combine values from different fields.

Functions: The Functions in Dynamic Publisher are a powerful tool to manipulate variable data in certain ways (Concatenate, Subset, Linear Calculation...).

Global Variables: The Global Variable allows using the same counter on different labels, and it includes remembering of the last printed value.

Connectivity

DDE, Active X: DDE as well as Active X enables almost any other Windows application to fully-control the label production within Dynamic Publisher.

OLE 2: Embedded Windows Objects (like Corel Draw Graphics, MS Word Text...) can be used on Dynamic Publisher labels.

Command files: Recurring Jobs can be simplified by using the Batch Printing Function.

Export: This feature allows to export labels designed in Dynamic Publisher to SAP's R/3 ERP system or to Windows CE handheld computers.

Database

Import data Wizard: The Wizard helps to access data from a database or a text file with just a few mouse clicks

Native support: Dynamic Publisher offers native database support for MS-Access-, dBase- and Paradox-Databases as well as for ASCII files

32-bit ODBC: Through 32-bit ODBC drivers, the use of data from almost any database is possible (Excel, Oracle, SQL Server...).

SQL Query capability: Either the automatic SQL creation with built-in query builder can be used, additionally the specification of custom SQL sentences is possible.

Select records: Database records can be manually selected before the Production starts.

Printing

Windows printers: Prints barcodes on any standard printer with Windows driver.

Thermal printers: Optimised printing on SATO thermal-transfer printers by using the printer-internal fonts and barcodes. Furthermore, it's also possible to use True-Type fonts and graphics. All printer specific settings like Speed, Darkness and Cutter, Printer-Internal Increment capabilities and memory cards are supported.

Network printing: Dynamic Publisher fully supports printing on any network-connected printer.

4. DYNAMIC AVIATOR



4.1 System requirements

- Windows 95/98/NT/ME and 2000
- Pentium-based IBM-compatible PC
- 16 MB of RAM (32MB recommended)
- 8 - 30 MB of available hard disk space
- CD-ROM drive

4.2 Features

Design

Fits seamlessly into the Windows Environment: Move and resize objects with the mouse, use of clipboard, undo, redo and zoom, Right-click menus, MDI (Multiple Document Interface), Drag & Drop objects from one label to another, Full colour support...

Up-to-date User Interface: Windows “Look and Feel” User Interface with all the latest features for optimal Usability.

Wizards: A Collection of Wizards offers active help for label design (label setup, definition variable fields, using data from database...).

WYSIWYG Design and Print Preview: Designing of labels in fully What You See Is What You Get manner and preview of labels with variable fields and actual data on the screen.

Powerful Design Tools: Easy designing of label using the tools and features as: Align (to label), Grid, Colours, Justification, Cut, Copy and Paste.

Lines & Boxes: Prints graphic elements with custom size and thickness

Label Stock: Use predefined SATO Dynamic stock label sizes or create custom-specific sizes .

On-line help: Comprehensive On-line help system including examples

Miscellaneous

Multiple-Language Support: Dynamic Aviator is currently translated into more than 10 languages.

Complete Euro support: The €-sign as well as a very flexible currency exchange function is implemented.

Password protection: This allows different user rights (Print only, Design only...)

Log file: Tracks all data related to the label production (also variable data) and can also be exported to an ASCII file.

Import labels: Labels designed in other programs (SegSoft Dynamic, EPC Label, Label Wizard, Dynamic Xtra...) can be reprocessed in Dynamic Aviator

Text

Windows Fonts: All sorts of Windows fonts (True-Type, ATM Type 1...) can be used on all types of printers.

Printer Fonts: Even Printer-internal fonts (Matrix, Vector) are fully supported.

Paragraph Text: Multi-line text elements with word wrap, best-fit, full justification and font control.

Text justification: Fixed, but also variable Text can be aligned to left, right or centre.

Graphics

Pictures, Logos: Dynamic Aviator supports six different graphic formats (PCX, GIF, BMP, JPG, WMF, PUT)

Resize, Stretch, Rotate: The changing of size and position can be done with the mouse, rotation is possible in steps of 1°.

Mirror: Graphics can be mirrored vertically as well as horizontally.

Barcodes

All Standard Barcodes: Supports all Industrial Standard Types of Barcodes

2D Symbolologies: All the latest 2D barcodes supported

SSCC, UCC/EAN 128 Wizard: Dynamic Aviator gives active help with specially designed Wizards for the usage of UCC/EAN 128 barcodes with more than 100 predefined Application Identifiers and Application Identifier data control.

Size, Ratio, Expansion: The user can specify all Barcode specific parameters

Human readable: Dynamic Aviator gives total control over the human interpretation of the barcode contents.

Check Digit Generation: A Check Digit can be automatically generated if needed.

Check Digit Algorithms: Even custom Check Digit Algorithms can be created.

Variable fields

Wizards: Offering active help to create all types of variable fields.

Keyboard Input: Dynamic Aviator will prompt for the field contents before the production starts. Also, a full data validation will be carried out.

Date&Time Stamp: With Dynamic Aviator, almost any date and time format can be printed.

Sequential Numbering: The automatic incrementing and decrementing function with custom step and count is very useful if, for example, serial numbers are required.

Date Calculation: The automatic date calculation function makes the creating of a “Best Before” (expiry date) field as simple as possible.

Graphics: The use of variable graphic fields with full graphic size control is possible as well.

Advanced Variable Features: It is possible to define Prefix, Suffix, Justification, Pad Character, Default values and many more Variable properties.

Linked Fields: Combine values from different fields.

Functions: The Functions in Dynamic Aviator are a powerful tool to manipulate variable data in certain ways (Concatenate, Subset, Linear Calculation...).

Global Variables: The Global Variable allows using the same counter on different labels, and it includes remembering of the last printed value.

Connectivity

DDE, Active X: DDE as well as Active X enables almost any other Windows application to fully-control the label production within Dynamic Aviator.

OLE 2: Embedded Windows Objects (like Corel Draw Graphics, MS Word Text...) can be used on Dynamic Aviator labels.

Command files: Recurring Jobs can be simplified by using the Batch Printing Function.

Export: This feature allows to export labels designed in Dynamic Publisher to SAP's R/3 ERP system or to Windows CE handheld computers.

Remote printing: This enables the user to control the label printing through a network or from a non-Windows application, and furthermore, the control through E-mail or COM ports is possible without custom programming.

Database

Import data Wizard: The Wizard helps to access data from a database or a text file with just a few mouse clicks

Native support: Dynamic Aviator offers native database support for MS-Access-, dBase- and Paradox-Databases as well as for ASCII files

32-bit ODBC: Through 32-bit ODBC drivers, the use of data from almost any database is possible (Excel, Oracle, SQL Server...).

SQL Query capability: Either the automatic SQL creation with built-in query builder can be used, additionally the specification of custom SQL sentences is possible.

Select records: Database records can be manually selected before the Production starts.

Database manager: The Database Manager helps to create database tables, add indexes for searching, input/modify/delete data in the form or grid mode, automatically imports ASCII files into databases...

Printing

Windows printers: Prints barcodes on any standard printer with Windows driver.

Thermal printers: Optimised printing on SATO thermal-transfer printers by using the printer-internal fonts and barcodes. Furthermore, it's also possible to use True-Type fonts and graphics. All printer specific settings like Speed, Darkness and Cutter, Printer-Internal Increment capabilities and memory cards are supported.

Network printing: Dynamic Aviator fully supports printing on any network-connected printer.

Font and Graphics Downloader: True-Type fonts and graphics can be transferred to the SATO printer internal memory for full speed printing.

Custom Data-Entry Forms/Applications for Printing

Form Design: Allows the creating of custom label printing applications without any programming skill. The End user can print labels without any interaction with the main labelling software.

Wizards: For creating custom printing forms, Wizards offer active help.

Advanced Elements: Many advanced Elements like Pre-defined Values, Button Value Selection, Input fields with Data Control, Graphics and Frames are available.

Label Preview: The Label Preview function on the form ensures that everything is set correct.

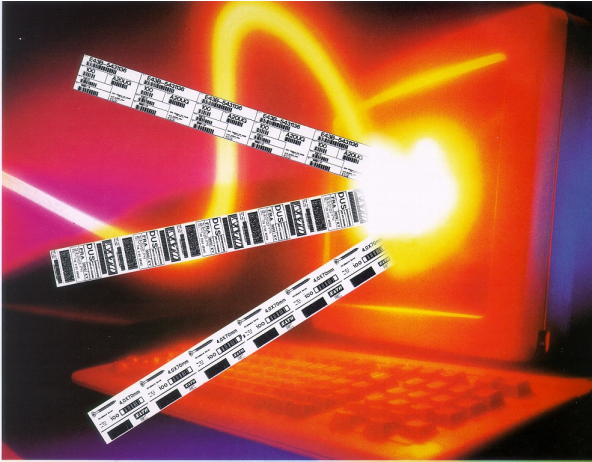
Data-Entry Control: It results is a minimised error possibility with extended data validation.

Database Grid: Allows the selection of items from a database and the printing of labels with only one mouse click.

Linked Forms: Multi-form Applications with menus for printing different kind of labels can be created easily.

Touch Screen Printing: Forms can also be used for running a production from Touch Screen Displays.

5. SEGSOFT DYNAMIC



5.1 System requirements

- Windows 3.x or higher
- x386-based IBM-compatible PC
- VGA-compatible Display
- 6 MB of RAM
- 10 MB of available hard disk space

5.2 Features

Design

WYSIWYG Design and Print Preview: Designing of labels in fully What You See Is What You Get manner and Preview of labels with variable fields and actual data on the screen.

Lines & Boxes: Prints graphic elements with custom size and thickness

On-line help: Comprehensive On-line help system including examples

Miscellaneous

Multiple-Language Support: SEGSOFT Dynamic is translated into 9 languages.

Password protection: This allows different user rights (Print only, Design only...)

Log file: Tracks all data related to the label production (also variable data) and can also be exported to an ASCII file.

Text

Windows Fonts: All sorts of Windows fonts (True-Type, ATM Type 1...) can be used on all types of printers.

Printer Fonts: Even Printer-internal fonts (Matrix, Vector) are fully supported.

Text justification: Fixed as well as variable Text can be aligned to left, right or center.

Graphics

Pictures, Logos: SEGSOFT Dynamic supports five different graphic formats (BMP, PCX, WMF, PCC, PUT)

Resize, Stretch, Rotate: The changing of size and position can be done with the mouse, rotation is possible in steps of 1°.

Barcodes

All Standard Barcodes: Supports all Industrial Standard Types of Barcodes

2D Symbolologies: The major 2D barcodes are supported as well

UCC/EAN 128: SEGSOFT Dynamic allows the creating of UCC/EAN 128 barcodes with more than 100 predefined Application Identifiers and Application Identifier data control.

Size, Ratio, Expansion: The user can specify all Barcode specific parameters

Human readable: SEGSOFT Dynamic can automatically create the human interpretation of the barcode contents.

Check Digit Generation: A Check Digit can be automatically generated if needed.

Check Digit Algorithms: Even custom Check Digit Algorithms can be created.

Variable fields

Keyboard Input: SEGSOFT Dynamic will prompt for the field contents before the production will start. Also, a full data validation will be carried out.

Date&Time Stamp: With SEGSOFT Dynamic, numerous date and time formats can be printed.

Sequential Numbering: The automatic incrementing and decrementing function with custom step and count is very useful if, for example, serial numbers are required.

Date Calculation: The date calculation function makes the creating of a “Best Before” (expiry date) field as simple as possible.

Graphics: The use of variable graphic fields with graphic size control is possible as well.

Advanced Variable Features: It is possible to define Prefix, Suffix, Justification, Pad Character, Default values and many more Variable properties.

Linked Fields: Combine values from different fields.

Functions: The Functions in SEGSOFT Dynamic are a powerful tool to manipulate variable data in certain ways (Concatenate, Subset, Linear Calculation...).

Global Variables: The Global Variable allows using the same counter on different labels, and it includes the remember of the last printed value.

Connectivity

DDE: DDE enables almost any other Windows application to fully-control the label production within SEGSOFT Dynamic.

Command files: Recurring Jobs can be simplified by using the Batch Printing Function.

Export: This feature allows to export labels already designed to the H.I.T. terminal or to the printer-internal memory

Database

Import data: The Internal Database allows to import data from a dBase database or a text file with just a few mouse clicks

Native support: SEGSOFT Dynamic offers native database support for dBase- and Paradox Databases as well as for ASCII files.

ODBC: Through 16-bit ODBC drivers, the use of data from almost any existing 16-bit database is possible (Access, Excel, Oracle, SQL Server...).

Select records: Database records can be manually selected before the Production starts.

Printing

SATO Thermal- and Thermal-Transfer Printers: Optimised printing on SATO Printers by using the printer-internal fonts and barcodes. Furthermore, it's also possible to use True-Type fonts and graphics. All printer specific settings like Speed, Darkness and Cutter, Printer-Internal Increment capabilities and memory cards are supported.

Network printing: SEGSOFT Dynamic fully supports printing on any network-connected printer.

Font, Graphics and Format Downloader: True-Type fonts, Graphics and Formats can be transferred to the SATO Printer internal memory for full speed printing (requires separate "Memory Card Manager" Software).

This page is intentionally left blank.

